

2724ZDR | 声波振动电机 Sonic Motor

应用领域：洗脸刷、脸部按摩仪、保健器材、清洁用具等。

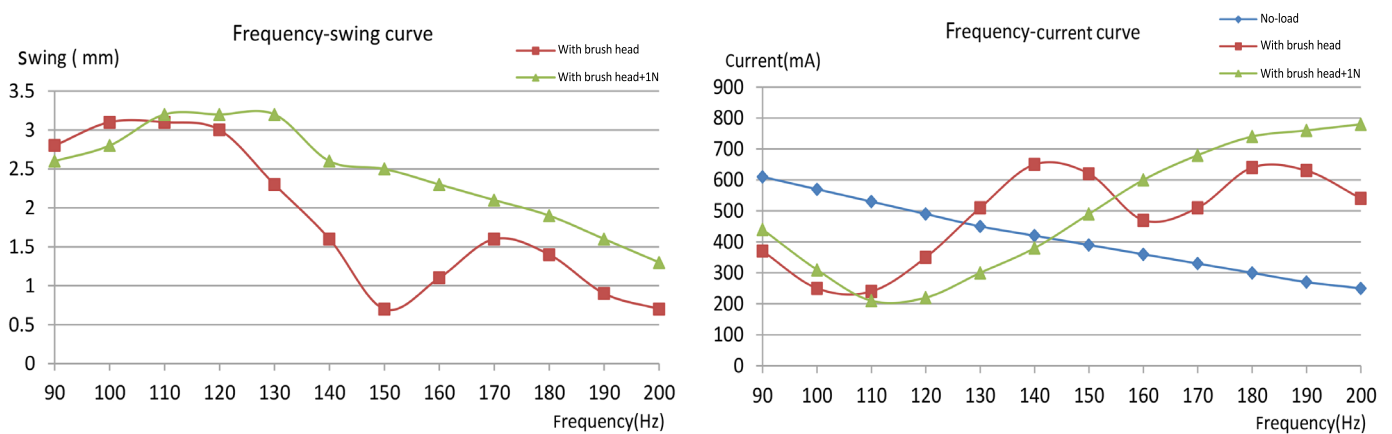
Applications: facial brushes, facial massagers, health care products, cleaning equipment, etc.

主要技术指标 | Characteristics

			-1-L7-30-3.7	-1-L14-50-2.5	-1-L19-35-5.0	
1	电压	Voltage	V	3.7	2.5	5.0
2	直流电阻	Resistance	Ω	2.2	2.2	2.2
3	工作频率范围	Operating frequency range	Hz	100~220	100~220	100~220
4	空载振动频次	No-load vibration frequency	Times / minute	26400	26400	26400
5	空载振动电流	No-load current	mA	150	135	180
6	启动转矩	Starting torque	mNm	40	27	54
7	启动电流	Starting current	A	1.7	1.15	2.3
8	负载 (刷头)	Rated load (Brush head)	g mm	10 31	10 31	10 31
9	负载振动频次	Load vibration frequency	Times / minute	20400	20400	20400
10	负载电流	Load current	mA	450	410	500
11	转子惯量	Rotor inertia	gcm ²	1.35	1.35	1.35
12	重量	Weight	g	49	49	49
13	工作温度范围	Operating temperature range	$^{\circ}\text{C}$	-10~+60	-10~+60	-10~+60

★可选参数 Options: 导线长度 Lead wires length 轴长 Shaft length 性能 Special coils

特性曲线 | Characteristics Curve



型号 / Model 2724ZDR-1-L7-30-3.7

外观图 | Outline Drawing

