

B7584FBHIE2B | 内转子无槽带内置驱动器 Inner Rotor With Integrated Driver, Slotless

应用领域：医疗器械、工业设备等精密驱动领域。

Applications: precision drives in medical equipment, industrial automation fields.

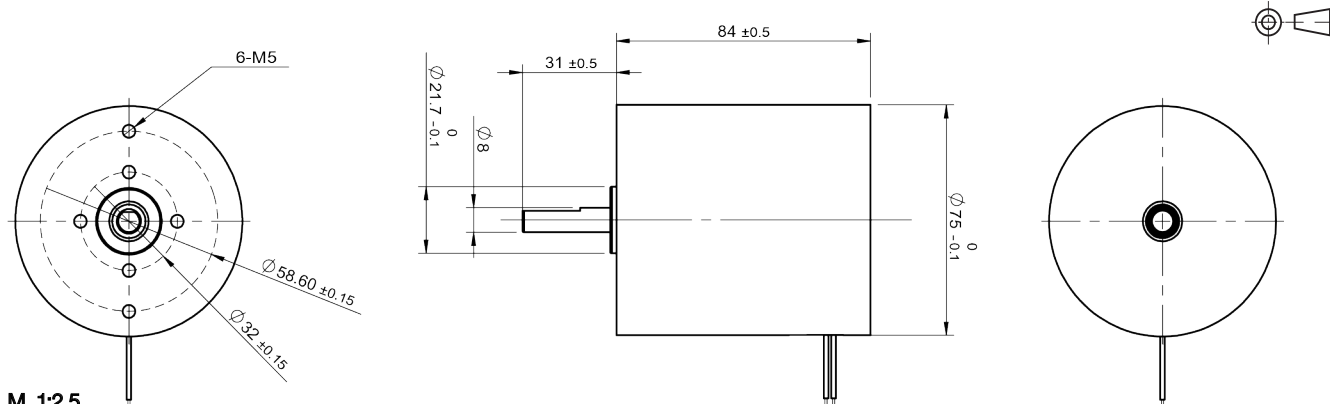
主要技术指标 | Characteristics

			63-24.0-0001	80-24.0-0002	50-24.0-0002
1	电压	Voltage	V	24	24
2	使用电压范围	Operating Voltage	V	12~26	12~26
3	端电阻	Terminal resistance	Ω	2.8	2.2
4	空载转速	No-load speed	rpm	6300	8000
5	空载电流	No-load current	A	0.3	0.3
6	堵转转矩	Stall torque	mNm	290	295
7	堵转电流	Stall current	A	8.6	10.9
8	额定转矩	Nominal torque	mNm	106	106
9	额定转速	Nominal speed	rpm	4000	5100
10	额定电流	Nominal current	A	3.2	4.1
11	最大输出功率	Max. output power	W	49	62
12	最大效率	Max. efficiency	%	66	69
13	反电势常数	Back-EMF constant	mV/rpm	3.7	2.9
14	转矩常数	Torque constant	mNm/A	35	27
15	KV 值	KV Value	rpm/V	263	333
16	转速 / 转矩斜率	Speed/torque gradient	rpm/mNm	22	27
17	转子惯量	Rotor inertia	gcm ²	28	22
18	重量	Weight	g	1160	1160
19	热阻 (机壳 - 环境)	Thermal resistance housing-ambient	K/W		2
20	热阻 (线圈 - 机壳)	Thermal resistance winding-housing	K/W		3
21	热时常数 (电机)	Thermal time constant motor	s		112
22	热时常数 (线圈)	Thermal time constant winding	s		8.9
23	工作温度范围	Operating temperature range	°C		-40~+100
24	绕组耐温等级	Thermal class of winding	°C		130
25	轴向间隙	Axial play	mm		4
26	径向间隙	Radial play	mm		0.3
27	动态轴向载荷	Axial load dynamic	N		10
28	静态轴向载荷	Axial load static	N		300
29	径向载荷 (距安装面 3mm)	Radial load at 3 mm from mounting face	N		215
30	极对数	No. of pole pairs			2
31	轴承	Bearings		2 枚滚动轴承/2 ball bearings	
32	换向结构	Commutation		霍尔传感器/Hall Sensor	
33	防护等级	Protection class		IP 30	

★可选参数 Options: 导线长度 Lead wires length 轴长 Shaft length 性能 Special coils

齿轮箱 Gearheads 轴承类型 Bearing type

外观图 | Outline Drawing



M 1:2.5

规格如有变更，恕不另行通知
Specification subject to change without notice

© 2022 CONSTAR
www.constarmotor.com