

BO2826N2B | 外转子无传感器 Outer Rotor, Sensorless

应用领域：无人机、航模等驱动领域。

Applications: UAV, aeromodelling, etc.

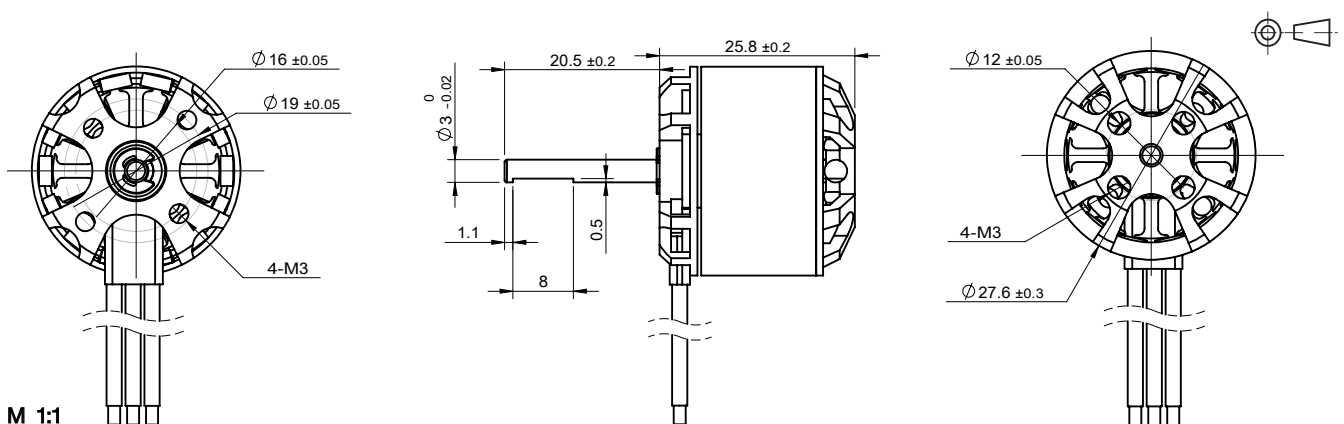
主要技术指标 | Characteristics

			01-104-12.0	02-104-24.0	03-104-36.0	
1	电压	Voltage	V	12.0	24.0	36.0
2	端电阻	Terminal resistance	Ω	0.14	0.58	1.26
3	空载转速	No-load speed	rpm	10400	10400	10400
4	空载电流	No-load current	A	0.44	0.23	0.15
5	堵转转矩	Stall torque	mNm	904	912	931
6	堵转电流	Stall current	A	83.3	41.7	28.6
7	额定转矩	Nominal torque	mNm	86.7	89.5	89.6
8	额定转速	Nominal speed	rpm	7820	8040	8500
9	额定电流	Nominal current	A	8.1	4.1	2.7
10	最大输出功率	Max. output power	W	247	248	254
11	最大效率	Max. efficiency	%	86.0	85.7	86.2
12	反电势常数	Back-EMF constant	mV/rpm	1.1	2.3	3.4
13	转矩常数	Torque constant	mNm/A	10.9	22.0	32.8
14	KV 值	KV Value	rpm/V	871	433	290
15	转速 / 转矩斜率	Speed/torque gradient	rpm/mNm	11.6	11.4	11.2
16	转子惯量	Rotor inertia	gcm^2	31	31	31
17	重量	Weight	g	53	53	53
18	热阻 (机壳 - 环境)	Thermal resistance housing-ambient	K/W		1.7	
19	热阻 (线圈 - 机壳)	Thermal resistance winding-housing	K/W		1.8	
20	热时常数 (电机)	Thermal time constant motor	s		300	
21	热时常数 (线圈)	Thermal time constant winding	s		43	
22	工作温度范围	Operating temperature range	$^{\circ}\text{C}$		-40~+120	
23	绕组耐温等级	Thermal class of winding	$^{\circ}\text{C}$		180	
24	轴向间隙	Axial play	mm		0.014	
25	径向间隙	Radial play	mm		0.008	
26	动态轴向载荷	Axial load dynamic	N		5	
27	静态轴向载荷	Axial load static	N		80	
28	径向载荷 (距安装面 3mm)	Radial load at 3 mm from mounting face	N		29	
29	极对数	No. of pole pairs			7	
30	轴承	Bearings			2 枚滚动轴承/2 ball bearings	
31	换向结构	Commutation			无传感器/Sensorless	
32	防护等级	Protection class			IP 20	

★可选参数 Options: 导线长度 Lead wires length 轴长 Shaft length 性能 Special coils 齿轮箱 Gearheads 轴承类型 Bearing type

编码器 Encoder 驱动器 Driver

外观图 | Outline Drawing



M 1:1